

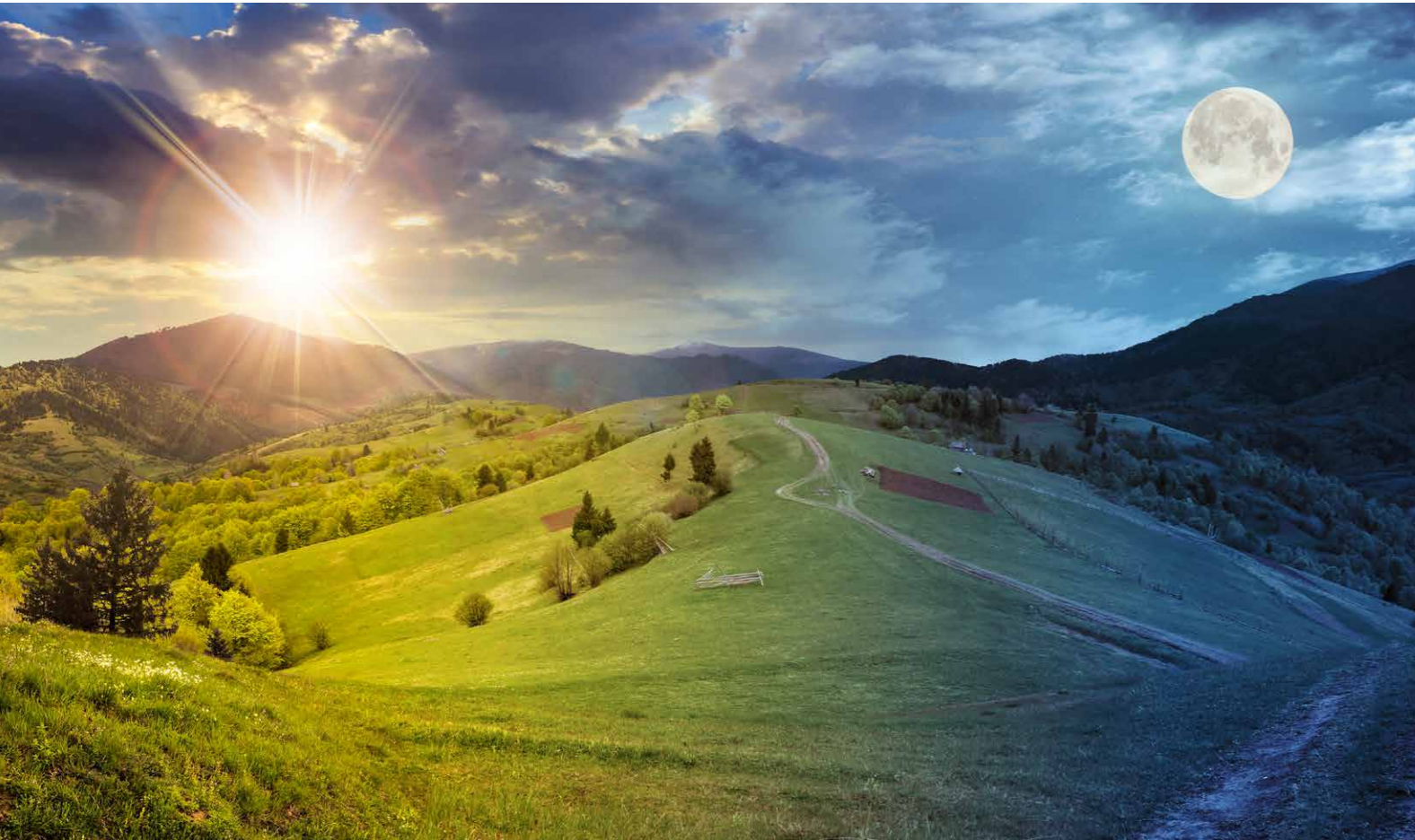


Temperature and Climate Test Chambers TensileEvent



Test whatever you like.

From shoe to brake hose - in research, development and quality assurance you need reproducible conditions. We'll support you.



From the North Pole to the Tropics.

Seasonal differences, different climatic zones - your materials and products must be able to withstand a variety of temperatures during manufacturing, transport, storage and use. The Temperature and Climate Test Chambers TensileEvent help you to test the influence of temperature and humidity on the properties, function and lifespan of your products. Reproducible, certified and under accelerated conditions.

Lots to test? No problem!

When testing your materials and products, you must adhere to numerous test standards and carry out long-term tests. Our Test Chambers are designed for these situations. The various models cover a wide range of applications and satisfy every need. For specific requirements, you can upgrade every system with many options based on your individual needs.

Perfection in performance, equipment and design.

Temperature and Climate Test Chambers TensileEvent.

Precisely engineered.

We know what matters for your tests: reliable, precise and reproducible results. That's why we design our test chambers to meet exactly these demands. Because incorrect results lead to incorrect conclusions. With your needs in mind, we already eliminate any interference factors during the design phase, relying on our comprehensive expertise and years of experience.

Perfectly manufactured.

For us, quality is our daily business. We use only high-quality materials and manufacture many of the components for our test chambers in-house. In addition, we have regular quality checks in place throughout the entire production process.

Absolutely low maintenance.

Set up, plug in, start the test. The intelligent, compatible control elements and intuitive user interface guarantee easy operation. Easily accessible maintenance elements ensure minimal service times. Diagnostics and inspection systems in every machine additionally shorten downtimes and optimise maintenance periods.



Our highlights:

- Interior and fittings made of high-quality steam-tight welded stainless steel
- Individually adjustable dimensions to suit any material testing machine
- Web-based user interface WEBSseason®

More equipment, right from the start.

Basic equipment setting standards.



You can find further details on equipment in our technical descriptions. **Contact us.**

Exterior



- **Flexible and mobile**
The mounted wheels make it easy to extend into and retract from the test machine. Integration in existing rail systems is possible.
- **Everything in view**
A heatable observation window ensures that you have the best possible view.

Interior



- **Individual and flexible**
Determine the position, size and number of access ports in the ceiling and floor according to your individual testing requirements.

Safety



- **Maximum safety with full control**
The external alarms use state-of-the-art security technology. They are connected via a potential-free contact and galvanically isolated from each other. This ensures that the monitoring system reliably sounds the alarm in the event of a fault.

Regulation & Control



- **Into the age of connectivity - with WEBSeason®**
You can use the innovative user interface **WEBSeason** to program, control and monitor your tests at any time and anywhere, even from your tablet or smartphone. Language and units can be set to suit the user and the settings can be saved. In this way, **WebSeason** creates a new dimension of flexibility and efficiency.



Reliable control as standard:
Digital measurement and control system for
operating and monitoring the Test Chamber.



Tailor-made testing.

Optional equipment for individual solutions.

Exterior



- **Everything under control**
In order to have access to the test specimens at any time, additional access ports in doors or walls are possible.

Interior



- **Like things even more extreme?**
For very high humidity a humidity control with additional steam humidification can be optionally integrated.

Regulation & Control



- **Set standards in communication**
With the software **SIMPATI**®, operating, documenting and archiving your test sequences is very easy.

You can find further details on equipment in our technical descriptions. **Contact us.**

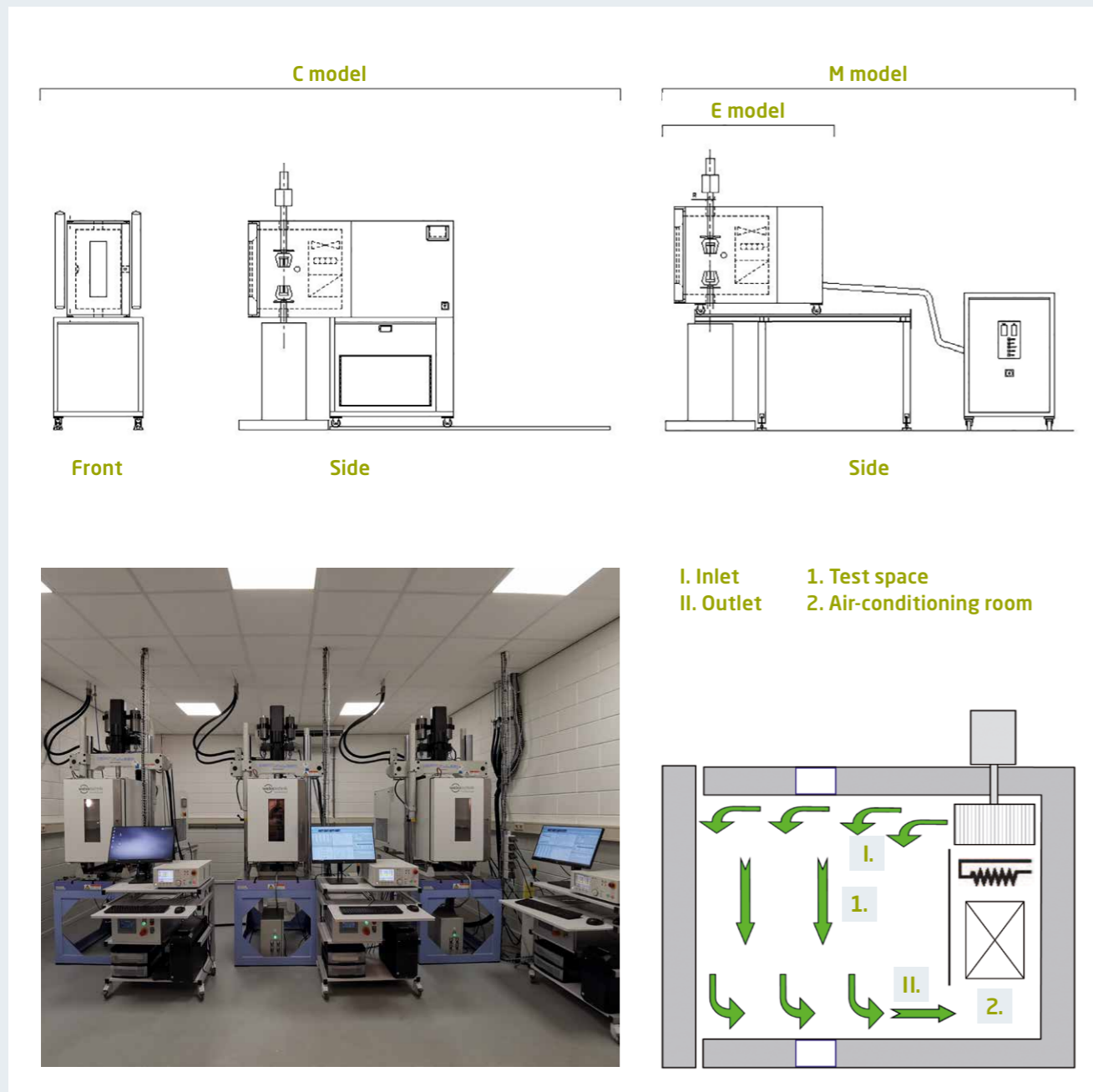


Developed exclusively for you:
The unique software package
for the perfect test process.



Easily passes any test.

Optimal test arrangement with TensileEvent.



You can find further details on equipment in our technical descriptions. **Contact us.**

All options in one device.

Depending on your requirements, TensileEvent can be used for various material tests. From tensile tests with one duct in the test chamber floor and ceiling to fatigue and pressure tests with several ducts. Perfectly suiting your needs.

- **C model - ideal up to -70 °C**
Basic device on castors with integrated aggregate chamber, by request with additional humidity control for climate tests.
- **E model - compact up to -30 °C and expandable**
Placed on a variable framework with pods for confined spaces. Expandable with LN2 up to -150 °C.
- **M model with separate aggregate chamber**
Optimally suited if only a limited installation depth is available.

Flexibly designed.

Our Temperature and Climate Test Chambers TensileEvent are perfectly fitted to your facility, according to your needs. Here we especially consider the following issues:

- Compatible ducts
- Maximal width of test chamber
- Compressed air supply for long-term testing
- Communication port for test software

TensileEvent is ideally suited for material tests from a wide range of manufacturers.

Convincing technology. Reliable results.

The performance data at a glance.

Type	Top structure, exterior dimensions ¹ , WxDxH	Technology substructure, exterior dimensions ² , WxDxH	Technology substructure, exterior dimensions with 3 m fixed lines, WxDxH	Test chamber dimensions ³ , WxDxH	Door window, heated, WxH	Minimum temperature ⁴	Maximum temperature	Temperature deviation in time ⁵	Minimum temperature	Maximum temperature	Dewpoint temperature range ⁶	Humidity range ⁶	Humidity deviation in time ⁷		
	mm	mm	mm	mm	mm	°C	°C	K	°C	°C	°C	% RH	% RH		
PERFORMANCES FOR						TEMPERATURE TESTS			CLIMATE TESTS						
Test space 25 litres															
TensileEvent TE/25/30/180	410x560x1530	-	-	250x250x400	150x300	-30	+180	±1	-	-	-	-	-		
TensileEvent TC/25/30/180	410x560x1775	800x1100x720	-			-30	+180	±1	-	-	-	-	-	-	
TensileEvent TC/25/70/180	410x560x1775	800x1100x720	-			-70	+180	±1	-	-	-	-	-	-	
TensileEvent TM/25/30/180	410x560x1080	-	800x1100x1225			-30	+180	±1	-	-	-	-	-	-	
TensileEvent TM/25/70/180	410x560x1080	-	800x1100x1225			-70	+180	±1	-	-	-	-	-	-	
TensileEvent CE/25/30/180	410x560x1530	-	-			-30	+180	±1	+10	+80	+10 to +79	30 to 95	±3	±3	
TensileEvent CC/25/30/180	410x560x1775	800x1100x720	-			-30	+180	±1	+10	+80	+10 to +79	30 to 95	±3	±3	
TensileEvent CC/25/70/180	410x560x1775	800x1100x720	-			-70	+180	±1	+10	+80	+10 to +79	30 to 95	±3	±3	
TensileEvent CM/25/30/180	410x560x1080	-	800x1100x1225			-30	+180	±1	+10	+80	+10 to +79	30 to 95	±3	±3	
TensileEvent CM/25/70/180	410x560x1080	-	800x1100x1225			-70	+180	±1	+10	+80	+10 to +79	30 to 95	±3	±3	
Test space 70 litres															
TensileEvent TE/70/30/180	410x760x1730	-	-			250x450x600	150x500	-30	+180	±1	-	-	-	-	-
TensileEvent TC/70/30/180	410x760x1875	800x1100x720	-	-30	+180			±1	-	-	-	-	-	-	
TensileEvent TC/70/70/180	410x760x1875	800x1100x720	-	-70	+180			±1	-	-	-	-	-	-	
TensileEvent TM/70/30/180	410x760x1280	-	800x1100x1225	-30	+180			±1	-	-	-	-	-	-	
TensileEvent TM/70/70/180	410x760x1280	-	800x1100x1225	-70	+180			±1	-	-	-	-	-	-	
TensileEvent CE/70/30/180	410x760x1730	-	-	-30	+180			±1	+10	+80	+10 to +79	30 to 95	±3	±3	
TensileEvent CC/70/30/180	410x760x1875	800x1100x720	-	-30	+180			±1	+10	+80	+10 to +79	30 to 95	±3	±3	
TensileEvent CC/70/70/180	410x760x1875	800x1100x720	-	-70	+180			±1	+10	+80	+10 to +79	30 to 95	±3	±3	
TensileEvent CM/70/30/180	410x760x1280	-	800x1100x1225	-30	+180			±1	+10	+80	+10 to +79	30 to 95	±3	±3	
TensileEvent CM/70/70/180	410x760x1280	-	800x1100x1225	-70	+180			±1	+10	+80	+10 to +79	30 to 95	±3	±3	

Convincing technology. Reliable results.

The performance data at a glance.

Type	Top structure, exterior dimensions ¹ , WxDxH mm	Technology substructure, exterior dimensions ² , WxDxH mm	Technology substructure, exterior dimensions with 3 m fixed lines, WxDxH mm	Test chamber dimensions ³ , WxDxH mm	Door window, heated, WxH mm	Minimum temperature ⁴ °C	Maximum temperature °C	Temperature deviation in time ⁵ K	Minimum temperature °C	Maximum temperature °C	Dewpoint temperature range ⁶ °C	Humidity range ⁶ % RH	Humidity deviation in time ⁷ % RH	
PERFORMANCES FOR						TEMPERATURE TESTS			CLIMATE TESTS					
Test space 100 litres														
TensileEvent TE/100/30/180	560x760x1680	-	-	400x400x600	150x500	-30	+180	±1	-	-	-	-	-	
TensileEvent TC/100/30/180	560x760x1850	800x1100x720	-			-30	+180	±1	-	-	-	-	-	-
TensileEvent TC/100/70/180	560x760x1850	800x1100x720	-			-70	+180	±1	-	-	-	-	-	-
TensileEvent TM/100/30/180	560x760x1230	-	800x1100x1225			-30	+180	±1	-	-	-	-	-	-
TensileEvent TM/100/70/180	560x760x1230	-	800x1100x1225			-70	+180	±1	-	-	-	-	-	-
TensileEvent CE/100/30/180	560x760x1680	-	-	400x400x600	150x500	-30	+180	±1	+10	+80	+10 to +79	30 to 95	±3	
TensileEvent CC/100/30/180	560x760x1850	800x1100x720	-			-30	+180	±1	+10	+80	+10 to +79	30 to 95	±3	
TensileEvent CC/100/70/180	560x760x1850	800x1100x720	-			-70	+180	±1	+10	+80	+10 to +79	30 to 95	±3	
TensileEvent CM/100/30/180	560x760x1230	-	800x1100x1225			-30	+180	±1	+10	+80	+10 to +79	30 to 95	±3	
TensileEvent CM/100/70/180	560x760x1230	-	800x1100x1225			-70	+180	±1	+10	+80	+10 to +79	30 to 95	±3	
Test space 140 litres														
TensileEvent TE/140/30/180	610x860x1730	-	-	450x450x700	150x500	-30	+180	±1	-	-	-	-	-	
TensileEvent TC/140/30/180	610x860x1875	800x1100x720	-			-30	+180	±1	-	-	-	-	-	-
TensileEvent TC/140/70/180	610x860x1875	800x1100x720	-			-70	+180	±1	-	-	-	-	-	-
TensileEvent TM/140/30/180	610x860x1280	-	800x1100x1225			-30	+180	±1	-	-	-	-	-	-
TensileEvent TM/140/70/180	610x860x1280	-	800x1100x1225			-70	+180	±1	-	-	-	-	-	-
TensileEvent CE/140/30/180	610x860x1730	-	-			-30	+180	±1	+10	+80	+10 to +79	30 to 95	±3	
TensileEvent CC/140/30/180	610x860x1875	800x1100x720	-			-30	+180	±1	+10	+80	+10 to +79	30 to 95	±3	
TensileEvent CC/140/70/180	610x860x1875	800x1100x720	-			-70	+180	±1	+10	+80	+10 to +79	30 to 95	±3	
TensileEvent CM/140/30/180	610x860x1280	-	800x1100x1225			-30	+180	±1	+10	+80	+10 to +79	30 to 95	±3	
TensileEvent CM/140/70/180	610x860x1280	-	800x1100x1225			-70	+180	±1	+10	+80	+10 to +79	30 to 95	±3	

Convincing technology. Reliable results.

The performance data at a glance.

Type	Top structure, exterior dimensions ¹ , WxDxH	Technology substructure, exterior dimensions ² , WxDxH	Technology substructure, exterior dimensions with 3 m fixed lines, WxDxH	Test chamber dimensions ³ , WxDxH	Door window, heated, WxH	Minimum temperature ⁴	Maximum temperature	Temperature deviation in time ⁵	Minimum temperature	Maximum temperature	Dewpoint temperature range ⁶	Humidity range ⁶	Humidity deviation in time ⁷	
	mm	mm	mm	mm	mm	°C	°C	K	°C	°C	°C	% RH	% RH	
PERFORMANCES FOR						TEMPERATURE TESTS			CLIMATE TESTS					
Test space 205 litres														
TensileEvent TE/205/30/180	610x860x1930	-	-	450x650x700	150x500	-30	+180	±1	-	-	-	-	-	
TensileEvent TC/205/30/180	610x860x1975	800x1100x720	-			-30	+180	±1	-	-	-	-	-	-
TensileEvent TC/205/70/180	610x860x1975	800x1100x720	-			-70	+180	±1	-	-	-	-	-	-
TensileEvent TM/205/30/180	610x860x1480	-	800x1100x1225			-30	+180	±1	-	-	-	-	-	-
TensileEvent TM/205/70/180	610x860x1480	-	800x1100x1225			-70	+180	±1	-	-	-	-	-	-
TensileEvent CE/205/30/180	610x860x1930	-	-			-30	+180	±1	+10	+80	+10 to +79	30 to 95	±3	±3
TensileEvent CC/205/30/180	610x860x1975	800x1100x720	-			-30	+180	±1	+10	+80	+10 to +79	30 to 95	±3	±3
TensileEvent CC/205/70/180	610x860x1975	800x1100x720	-			-70	+180	±1	+10	+80	+10 to +79	30 to 95	±3	±3
TensileEvent CM/205/30/180	610x860x1480	-	800x1100x1225			-30	+180	±1	+10	+80	+10 to +79	30 to 95	±3	±3
TensileEvent CM/205/70/180	610x860x1480	-	800x1100x1225			-70	+180	±1	+10	+80	+10 to +79	30 to 95	±3	±3
Test space 260 litres														
TensileEvent TE/260/30/180	610x1060x1930	-	-	450x650x900	150x500	-30	+180	±1	-	-	-	-	-	
TensileEvent TC/260/30/180	610x1060x1975	800x1100x720	-			-30	+180	±1	-	-	-	-	-	-
TensileEvent TC/260/70/180	610x1060x1975	800x1100x720	-			-70	+180	±1	-	-	-	-	-	-
TensileEvent TM/260/30/180	610x1060x1480	-	800x1100x1225			-30	+180	±1	-	-	-	-	-	-
TensileEvent TM/260/70/180	610x1060x1480	-	800x1100x1225			-70	+180	±1	-	-	-	-	-	-
TensileEvent CE/260/30/180	610x1060x1930	-	-			-30	+180	±1	+10	+80	+10 to +79	30 to 95	±3	±3
TensileEvent CC/260/30/180	610x1060x1975	800x1100x720	-			-30	+180	±1	+10	+80	+10 to +79	30 to 95	±3	±3
TensileEvent CC/260/70/180	610x1060x1975	800x1100x720	-			-70	+180	±1	+10	+80	+10 to +79	30 to 95	±3	±3
TensileEvent CM/260/30/180	610x1060x1480	-	800x1100x1225			-30	+180	±1	+10	+80	+10 to +79	30 to 95	±3	±3
TensileEvent CM/260/70/180	610x1060x1480	-	800x1100x1225			-70	+180	±1	+10	+80	+10 to +79	30 to 95	±3	±3
Options														
LN ₂ cooling system	Up to -150 °C													
Temperature range	Up to +250 °C													
Access ports	In side wall													
Window	In side wall													
Various dimensions	On request													

¹Without technics or substructure, depth for C types with flow of 450 mm.

²Minimum height 720 mm from the floor.

³Dimensions may be changed upon arrangement.

⁴Temperatures <+10 °C are permitted in continuous operation; temperatures <+10 °C are permitted discontinuously or with automatic defrost (version -20 °C).

⁵In the middle of the test space when it is empty and in steady state, without specimen, without heat radiation and without additional equipment, depending on temperature.

⁶Minimum humidity range depends on the customer's compressed air dewpoint.

⁷In the middle of the test space and in steady state, depending on climate value.

The performance data refer to +25 °C ambient temperature, rated voltage of 400 V 3/N/PE 50 Hz as well as an empty and sealed test space; without additional equipment and without heat compensation.

The product needs fluorinated gases for functioning. Depending on the type, it contains refrigerants R449A and R23.

Become more efficient.

Our solutions will save you time and money.

Get the most out of your test facility.



Create your own perfect testing process with the software package SIMPATI®.

Process management/documentation/networking

- Up to 99 systems can be connected
- Programs for automated processes
- Documentation, visualisation and management of process data
- Traceability of process data for seamless quality control

Unlimited testing.

Test Chambers for all requirements.

We have a broad range of devices and systems for environmental simulation. No matter whether temperature, climate, vibration, corrosion, emission, altitude, pressure or combined stress testing: we have the right solution for you and deliver systems in all sizes, from series versions to customer-specific, process-integrated systems. The choice is yours. For high reproducibility and precise test results.

You can find further information at www.weiss-technik.com



We measure ourselves by our service!

Our services - lots of good reasons:

- Global service network
- Wide selection of preventive maintenance
- Reliable spare part supply
- Special deployments available any time
- Certified proper disposal of outdated devices

24/7-Service-Helpline:
+31 344 670 400

Our Service Experts are always near you.

Passionately innovative.

We work in partnership to support companies in research, development, production and quality assurance.
With 22 companies in 15 countries at 40 locations.

weisstechnik

For a safe future.



Environmental Simulation

The first choice for engineers and researchers for innovative, safe environmental simulation facilities. In fast motion, our test systems can simulate all the influences in the world as well as for instance in space. In temperature, climate, corrosion, dust or combined stress tests. With a very high degree of reproducibility and precision.



Air Solutions

As the leading provider of clean rooms, climate technology and air dehumidification, we consistently ensure optimal climatic conditions for people and machines. For industrial production processes, in hospitals, mobile operation tents or in the field of information and telecommunications technology. From project planning to implementation.



Heat Technology

Experienced engineers and designers develop, plan and produce high-quality, reliable heat technology systems for a broad range of applications from heating and drying cabinets to microwave systems and industrial furnaces.



Pharmaceutical Technology

With decades of experience and know-how, we guarantee the most sophisticated clean air and containment solutions. Our comprehensive and innovative range of products includes barrier systems, laminar flow systems, safety workbenches, isolators, airlocks and stability test systems.

Weiss Technik Nederland B.V.

Newtonstraat 5
4004 KD Tiel Netherlands
T +31 344 67 04 00
info.nl@weiss-technik.com
www.weiss-technik.com



UT-TensileEvent-01.2E/08 2021

Test it. Heat it. Cool it.

Illustrations may contain options.
Subject to technical changes.